

ELECTRIC VALVING/DEVALVING UNIT FOR PORTABLE EXTINGUISHERS WITH INTEGRATED PRESSURIZATION SYSTEM WITH NITROGEN



The EL100 machine is designed for screwing/unscrewing valves on portable fire extinguishers and for pressurizing them with nitrogen.

After placing the fire extinguisher on the machine and manually positioning the interfaces (screwing or pressurizing) on the valve, operation is completely automatic.

The logic guides the operator step-by-step through the validation of the screwing and pressurization steps, making the operations fast and automatic, but also safe.

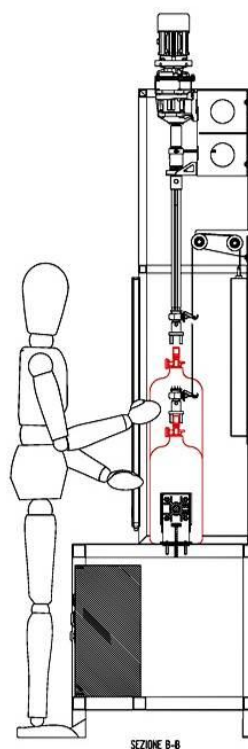
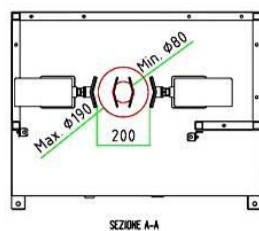
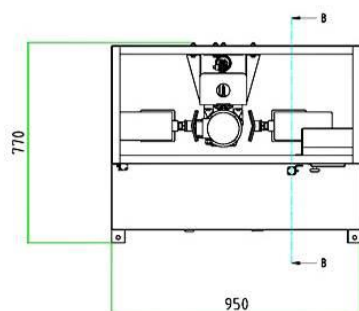
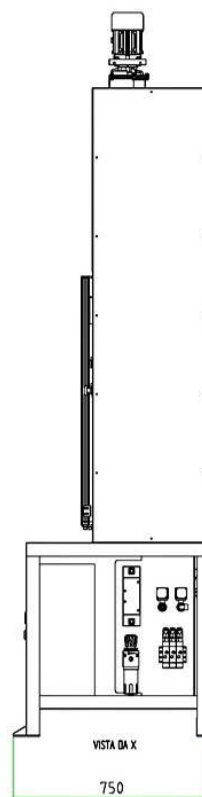
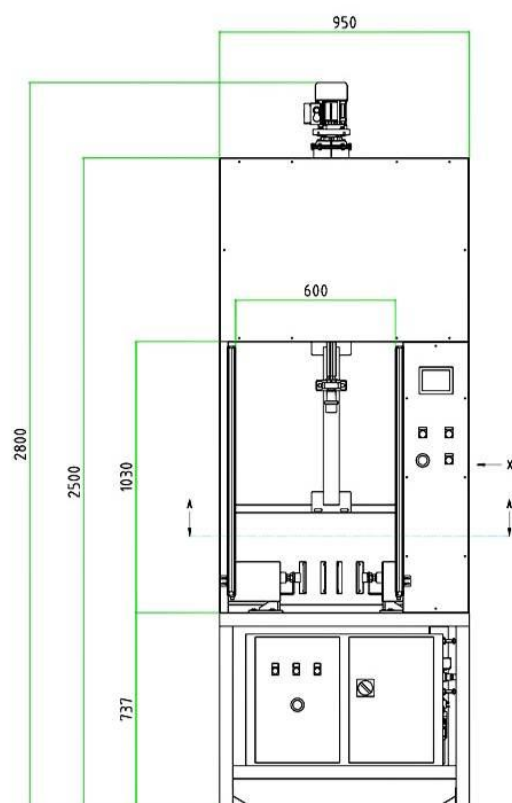
The screwing torque is controlled by a digital torque meter with an accuracy of $\pm 0.5\%$.

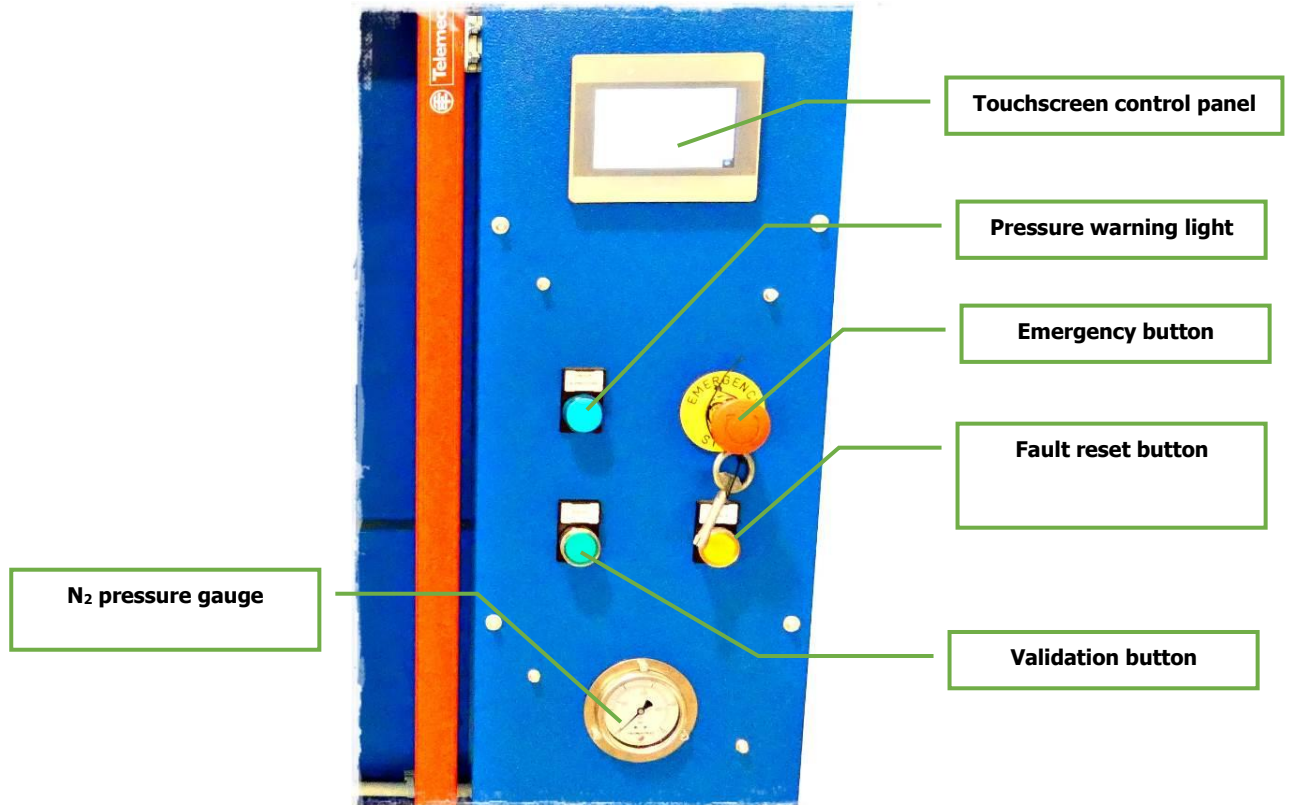
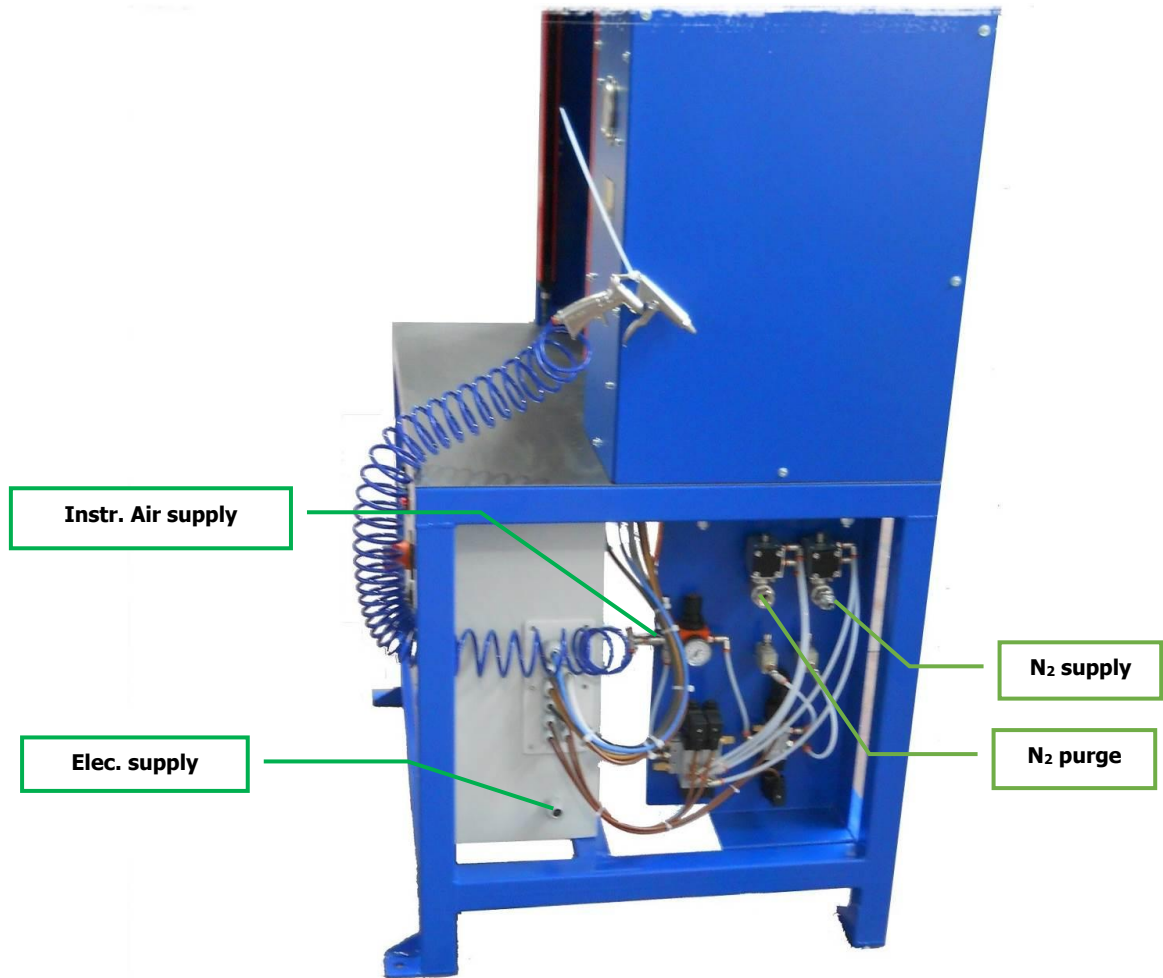
The machine is designed to be integrated into an Industry 4.0 business management system with data input and output interface and remote assistance.

The machine also allows the pressurization of wheeled fire extinguishers using the same method as portable fire extinguishers.

TECHNICAL DATA

	VALUE	M.U.
Electrical supply	400 50	[V] [Hz]
Total electrical power	0,6	[KW]
Max torque	90	[Nm]
Instrument air supply	6÷8	[bar]
Compressed air consumption for cylinder locking	100	[NI]
Nitrogen max supply	18	[bar]
Locking diameters	Ø80 ÷ Ø190	[mm]
Maximum cylinder height (without valve)	650	[mm]
Minimum cylinder height (without valve)	300	[mm]
Noise level (a 0,5 m)	<80	[dB]







Simple and intuitive management menu

